

Dynacord WPN1 and SONICUE Sound System Software version 1.2.4



Dynacord announces its latest hardware and software additions for system designers, system integrators and professional users. With the introduction of the networked WPN1 wall panel controller and version 1.2.4 of SONICUE Sound System Software, two new offerings are now available to make sound system setup and control even easier.

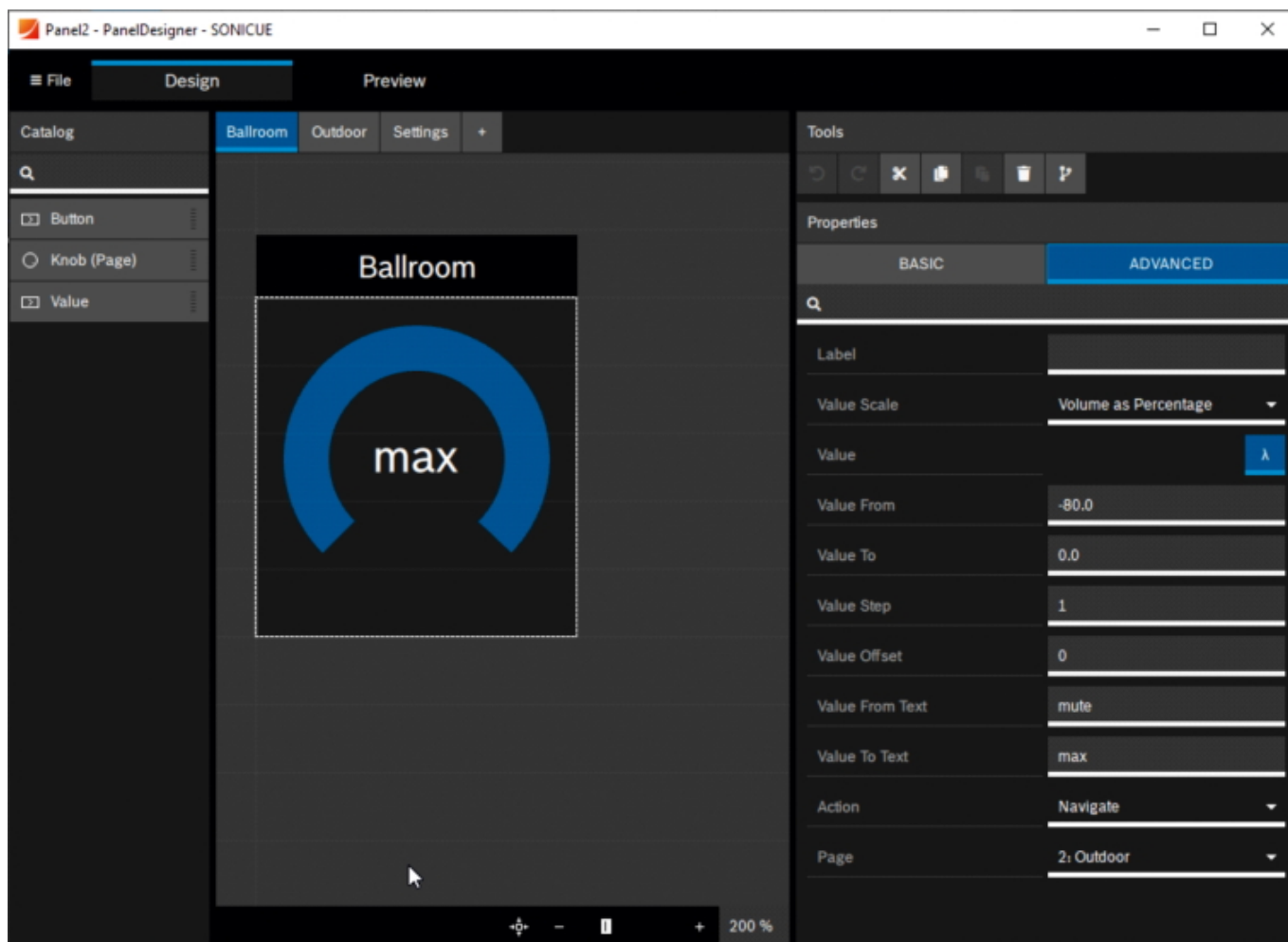
Dynacord WPN1 is a compact wall panel controller featuring a 4.5 cm (1.77") color TFT display and a single-knob encoder, allowing personnel to make quick and convenient sound adjustments such as volume control, source selection and muting, as well as other system functions. The PoE (Power over Ethernet) powered device is easy to install and available for both EU and US standard wall-mount boxes. It ships with interchangeable white and black front covers to blend perfectly into most room designs.

Thursday, 11 August 2022 19:29

WPN1 is networked and connected to Dynacord's MXE5 Matrix Mix Engine, a 24 x 24 performance audio matrix offering comprehensive control, routing and mixing functionalities. Serving as a control server for all system-wide commands, MXE5's system logic enables WPN1 to control one or multiple audio zones, as well as other peripheral equipment such as lights, projectors or blinds. Unicode character support allows the system designer to label controls on the display in local languages.

WPN1 provides a cost-efficient option, especially in small installations, or in large projects that require a high number of control panels. System control by multi-PIN protection and screensaver options can be conveniently configured via the panel designer, an integral part of SONICUE Sound System Software.

The current SONICUE software release 1.2.4. already supports the new WPN1 wall panel controller. It further enhances the system logic of the MXE5 Matrix Mix Engine by adding an active HTTP Application Programming Interface (API) to actively control third-party devices. The new release also features a scheduler function for recurring events, turning the MXE5 from an audio processor into a system control center.



In addition, control panel support for TGX and IPX series power amplifiers has been

Thursday, 11 August 2022 19:29

implemented to monitor and control these devices without the need for an MXE5, on PC and iOS devices or via a TPC-1 touch panel controller. Parameters such as level, mute, preset and recall, as well as status flags and VU metering, can be now used to create custom control panels for sound system operation, monitoring and supervision.

SONICUE's unique and patented flyout concept has been further improved. The "Copy & Paste EQ flyout" now allows users to conveniently copy and paste any consistent parameters into other EQ flyouts without the need to manually enter all values. It also works for multi selections as well as for mixed devices - for example, pasting the EQ setting from an Dynacord L or C series power amplifier into an IPX or MXE, or vice versa.

SONICUE software is available as a free download from the Dynacord website; the WPN1 wall panel controller will be on sale in fall 2022.

www.dynacord.com